

ARTICLES IN THIS
ISSUE

[NARI Home Tour](#)

[Featured Project](#)

[Smoke Detectors](#)

[RDB on Facebook](#)

[Join Our Mailing List!](#)

If you wish to forward
this e-newsletter to a
friend or colleague,
please click [here](#).



NARI Home Tour

Rochman Design-Build will be showcasing a recently completed project on the upcoming NARI Tour of Remodeled Homes, on Saturday and Sunday May 14th & 15th, 2011.

The Tour is organized by NARI of Southeast Michigan (Gary is the chairman of the event). This 8th annual event is a spring tradition for Washtenaw County homeowners, and has recently been expanded to the North Woodward Corridor as well. The tour is expected to draw a large crowd to the 14 professional projects on display this year.

Come visit us during the Tour at House #6, 2120 Wallingford in Ann Arbor. We are showing multiple projects in this Ives Woods home (see the next article for details). Details about the Tour are available online at www.narisemich.org. Tickets are \$10 for adults, can be used both days at all homes, and will be available for purchase at all the homes during the Tour. We look forward to seeing you there!

ADDITIONAL
RESOURCES

[RDB Website](#)

[RDB Facebook](#)

[NARI SE Michigan](#)

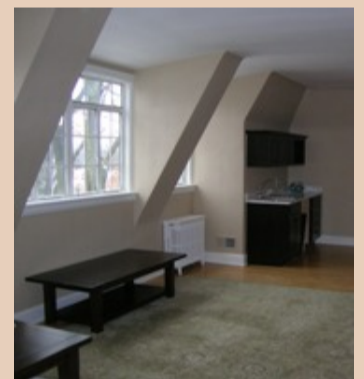
Featured Project: Hoff Remodel

Often a new client will come to us with a remodeling wish list that needs to be done in phases. Sometimes this is because of cash flow, other times so that the family can live in the home during the work. One of RDB's great strengths lies in creating a project for a current budget while developing a master plan for future work. When we return later to continue remodeling, the work is faster and smoother. This newsletter's featured project is one such instance.

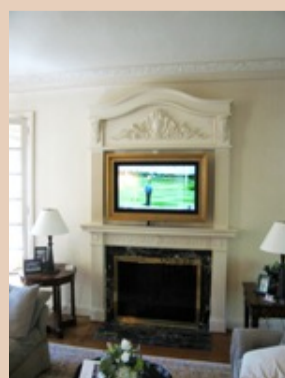
We have completed three separate projects in the Hoff residence and are currently finishing up our fourth. The first and largest was the remodeling of the master suite. Before we started, the bath was completely out of character with the house, with no modern luxuries. The closet was tiny and cramped and lacked storage space. The location on the second floor made an addition impractical, and the symmetry of the French Chateau styled exterior prevented us from moving windows.



The solution was to utilize an existing under-used space: a spare bedroom adjacent to the master. Entrances off the hall were adjusted, and this bedroom became a master closet and second floor laundry. The existing closet area was then devoted entirely to the new bathroom. This new luxurious master bath features marble tiles, mahogany cabinetry, crystal lighting, a 2-person walk-in shower and a claw foot soaking tub. The master closet is equally spacious, with custom storage units and a mini-laundry area.



The 3rd floor attic (750 sf of available space) was remodeled to create a comfortable family room space, an exercise area, a kitchenette, and a flexible area currently used for scrapbooking and crafts. The 2nd floor bathroom received a new floor plan layout along with updated fixtures and finishes. We used a palette of white mosaic floor tiles, white subway tile wainscoting, dark cherry cabinetry, and white Carrera marble counters for a classic 1920's look.

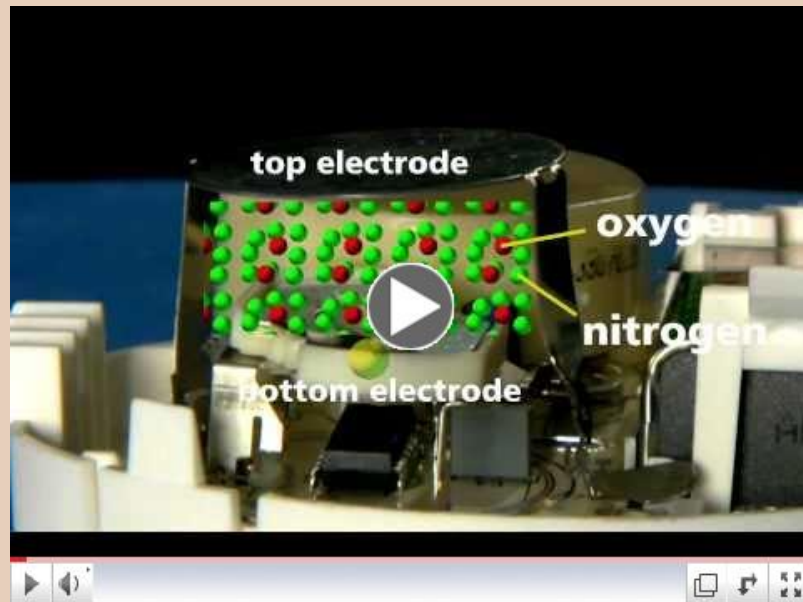


In the 1st floor living room a new flat screen TV was designed to blend in over a very traditional fireplace and painted wood mantle. A gold-framed mirror is now hung above the mantle, surrounded by a curved pediment with flutes and carvings to continue the French Provincial style of the interior. The television only appears "through" the mirror when in use, preserving the feel of the formal space. We used a great new product from [FrameMyTV.com](#).

All of these projects will be on display as part of the NARI Home Tour this May 14th and 15th. You can see more photos, including in progress shots, on our [website](#).

Smoke Detector - How They Work

As a change of pace from our standard article format, this month we have a video to share. This one comes from Bill Hammack, a professor at the University of Illinois and operator of EngineerGuy.com. There you will find a whole series of videos about how common household items work. Today's video topic? Smoke detectors. We thought this was a great video and wanted to share it, even though it gets VERY technical for a little while:



Now that you know how they work, you should make sure that the detectors in your home work. Most modern smoke detectors have a button to easily test them. Make sure the alarm sounds and is loud enough to be heard in nearby areas. Look for areas where no sound can be heard and consider relocating/adding new detectors. Detectors that are over ten years old should be replaced. If the detector is battery operated, you should also replace the 9V at least once every year.

Please make time for these simple steps. It could save lives.

Help Welcome RDB to Facebook

Rochman Design Build has embraced social media, setting up our very own [Facebook page](#). Please stop by and give us a "like." We'll be releasing more information via Facebook as time goes on. If you have any suggestions on what you'd like to see, leave us a message on our "wall". We'd love to hear from you.

[Find us on Facebook](#) 



Rochman
DESIGN-BUILD

2294 S. Industrial Hwy Ann Arbor, MI 48104

734.761.6936